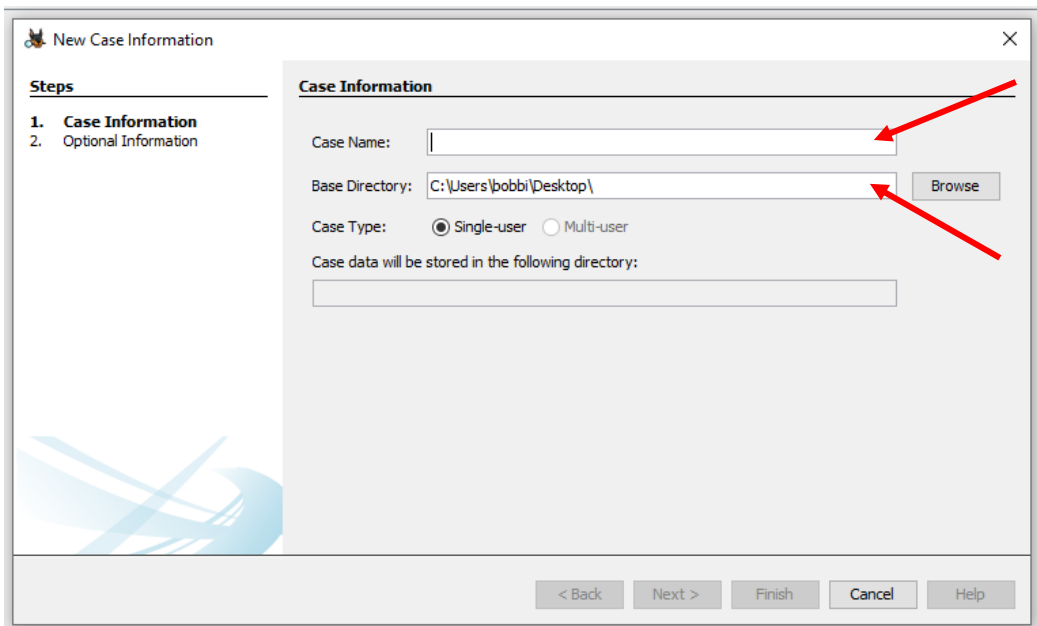


1. Open Autopsy
2. Click on New Case



3. Enter the Case Name – Escape Room & the directory where you want to store your case



4. Press Next

The screenshot shows the 'New Case Information' dialog box. On the left, a 'Steps' list shows '1. Case Information' as the current step and '2. Optional Information' as the next step. The main area is titled 'Case Information' and contains the following fields:

- Case Name:
- Base Directory:
- Case Type: Single-user Multi-user
- Case data will be stored in the following directory:

At the bottom, there are five buttons: '< Back', 'Next >', 'Finish', 'Cancel', and 'Help'. A red arrow points to the 'Next >' button.

5. Enter the case number and your name

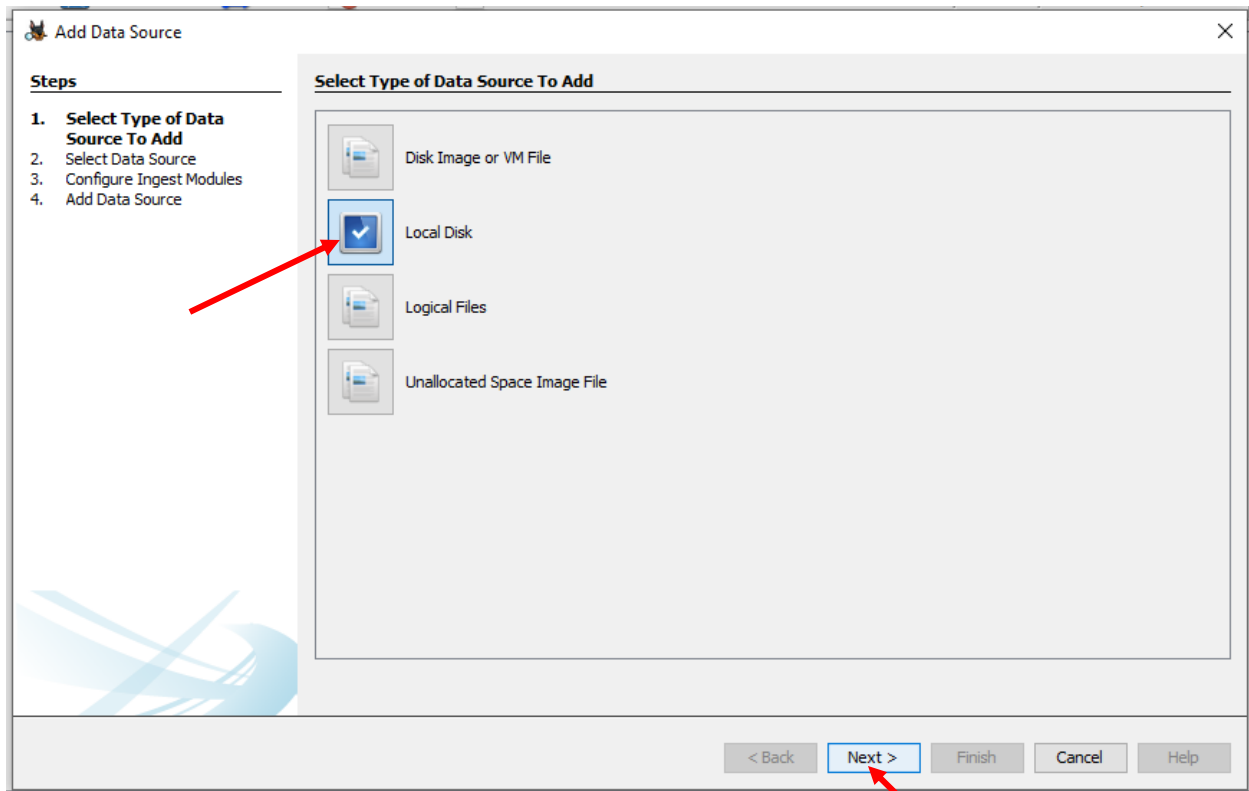
The screenshot shows the 'New Case Information' dialog box at the 'Optional Information' step. The 'Steps' list on the left now shows '2. Optional Information' as the current step. The main area is titled 'Optional Information' and contains the following fields:

- Case Number: (indicated by a red arrow)
- Examiner Name: (indicated by a red arrow)
- Phone:
- Email:
- Notes:
- Organization: Organization analysis is being done for:

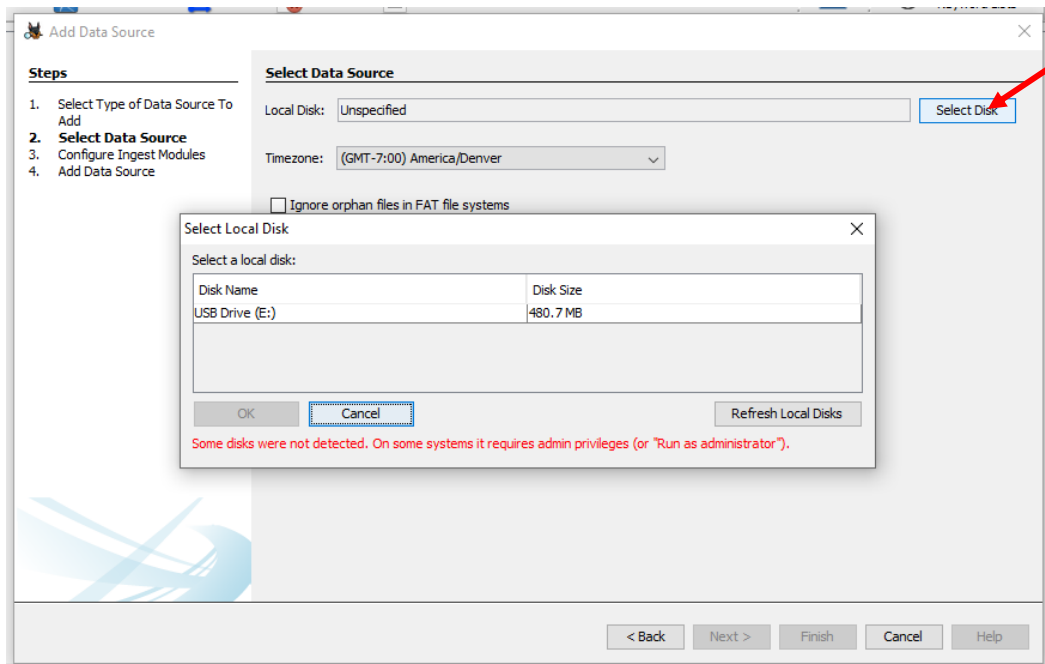
At the bottom, there are five buttons: '< Back', 'Next >', 'Finish', 'Cancel', and 'Help'. A red arrow points to the 'Finish' button.

6. Click Finish

7. Select Local Disk and press Next

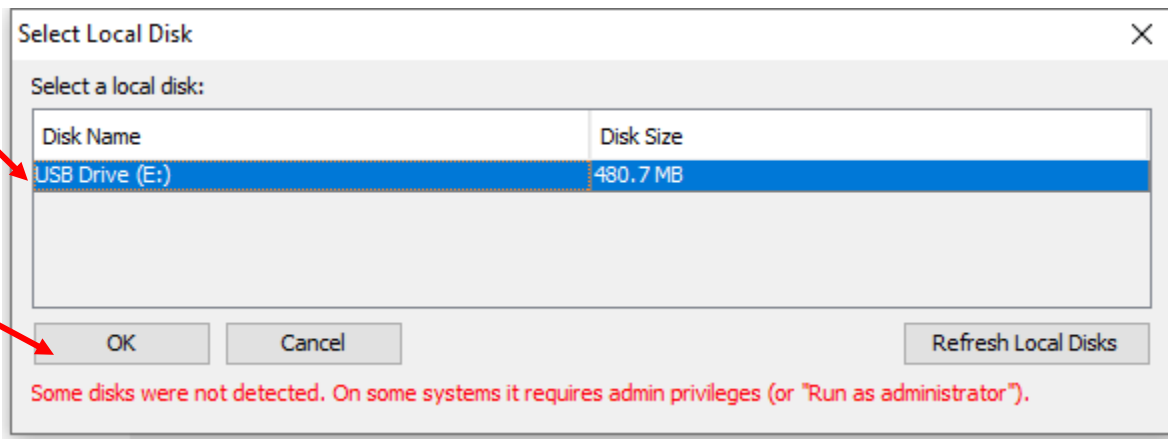


8. Click on Select Disk

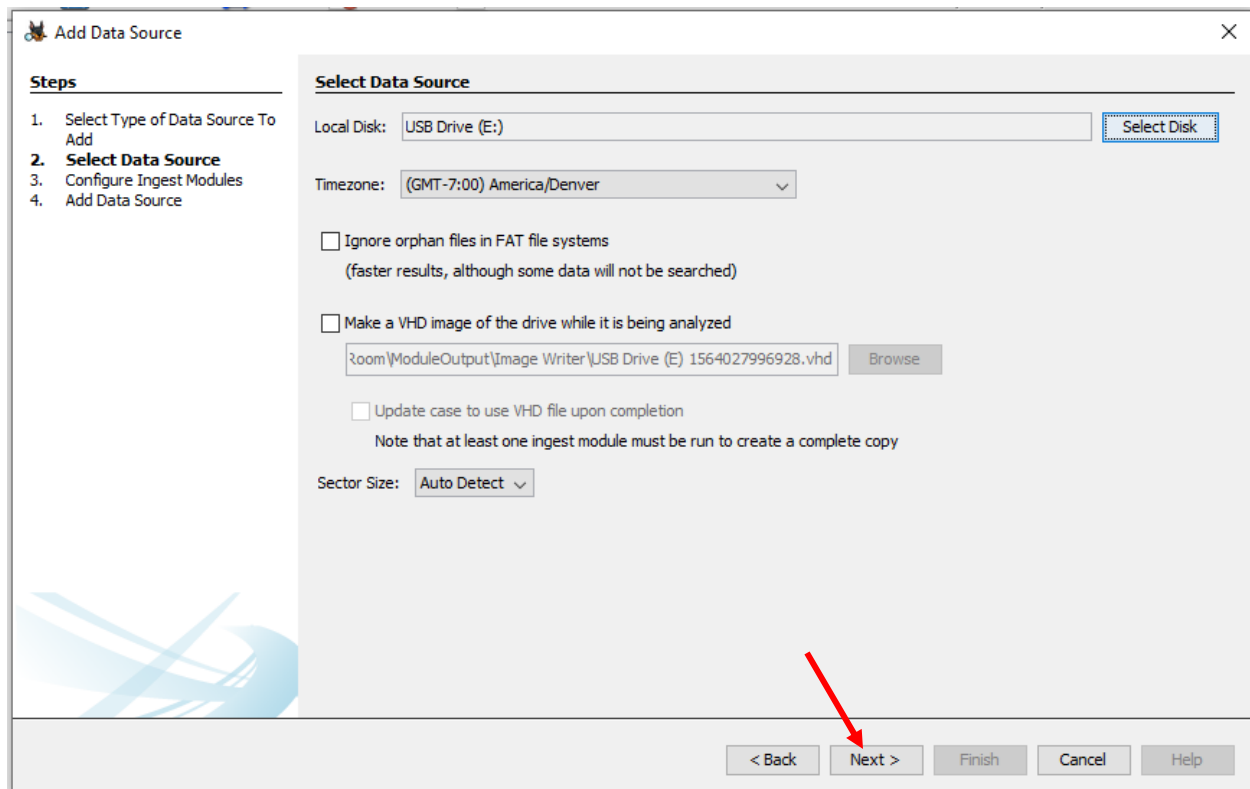


9. Click on USB Drive (E:)

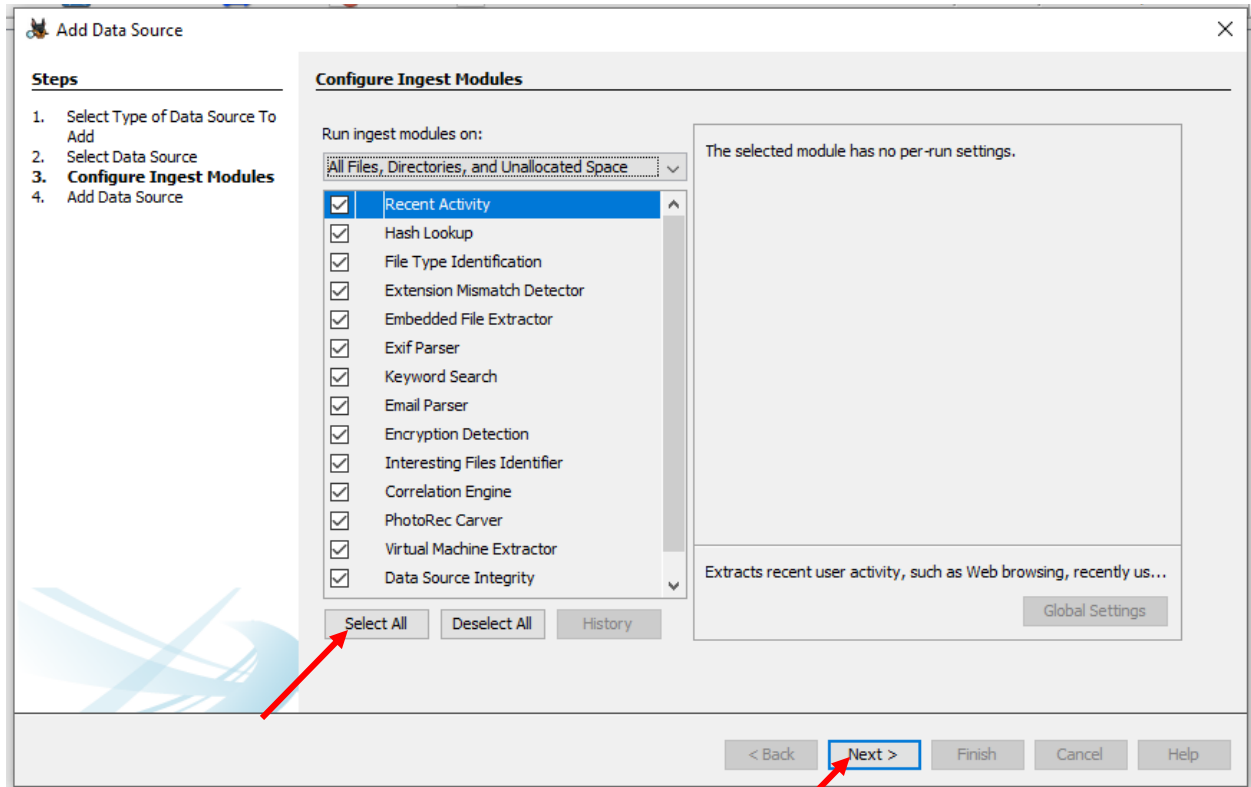
10. Click OK



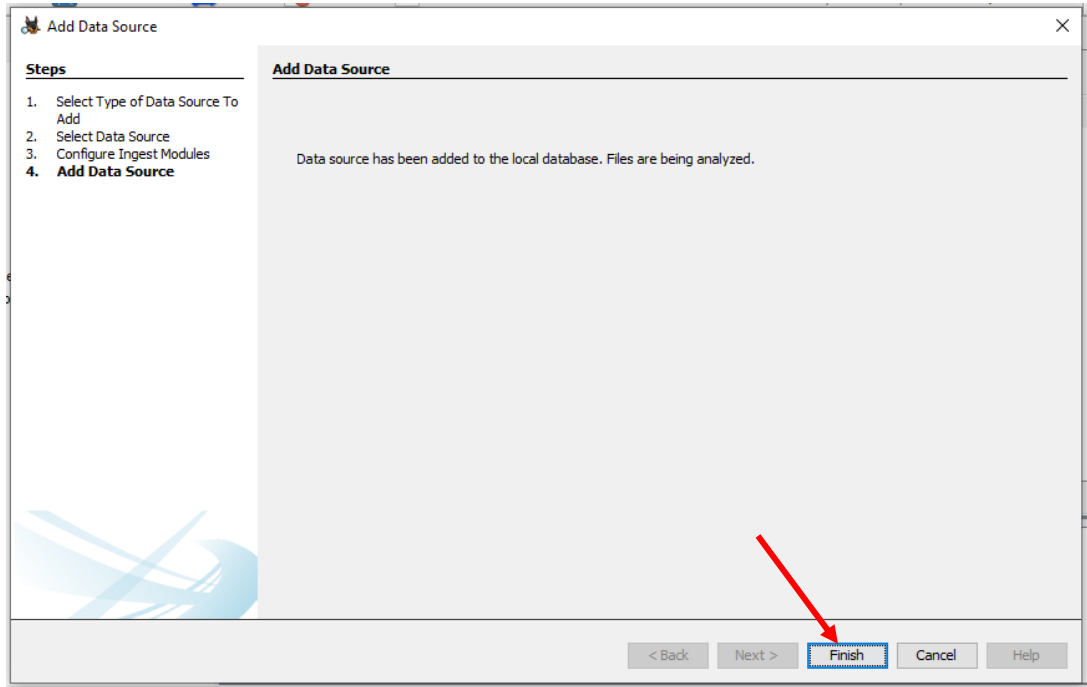
11. Click Next



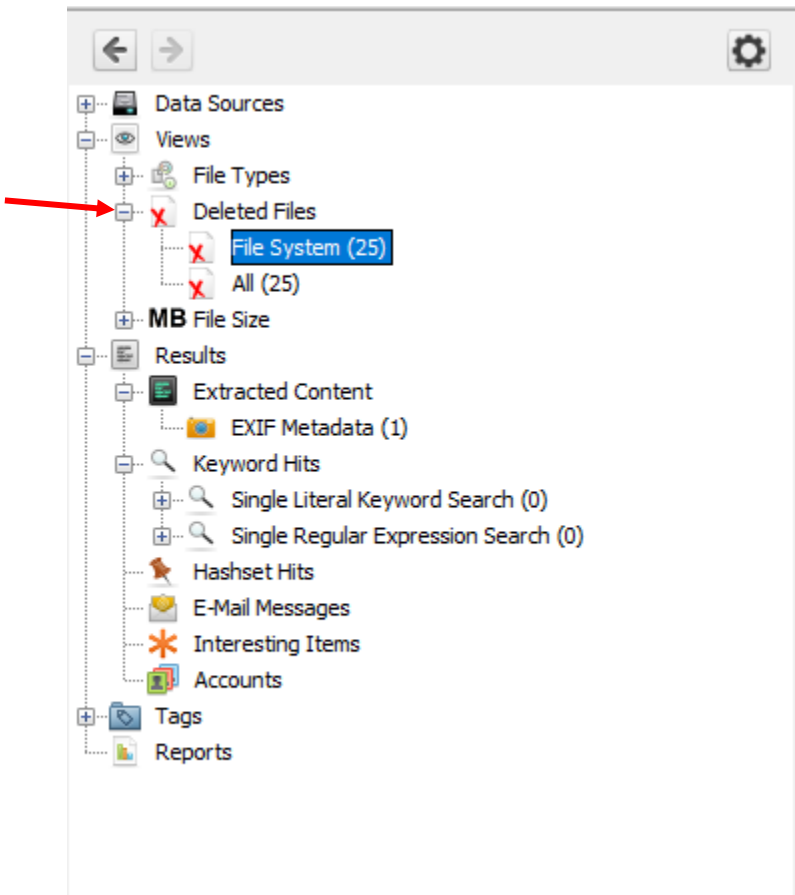
12. Select all and click Next



13. Click Finish



14. Click on Deleted Files in the tree structure to the left. Select File System.



15. Select the file you want to look at.

